



User Guide

Congratulations on your purchase!

Dear Grixx product owner,

Thank you for your trust in Grixx and the purchase of the wireless charger.

This convenient charger, enables you to charge your smartphone without connecting with a cable to your device.

As an owner of a Grixx product you are entitled to our warranty, which is available to you for 2 years after your purchase. For any questions or problems please contact warranty@grixx.eu. We are happy to help you and solve any issues.

Happy Times!

Content

Welcome	2
About these instructions	4
Intended use	4
Specifications	4
In the box	4
Qi devices	5
How to use	5
Phone cases	5
Cleaning	5
FAQ's	6
Safety instructions	6
Operating conditions	6
Exclusion of liability	6
Environmental information	7
Disposal	7
Compliance	8
Social Compliance	8
About Grixx	9

Grixx User Guide

About these instructions

Read these instructions carefully and please observe and read all references made in these instructions to guarantee a long life and reliable use of the device. Please keep these instructions ready to hand and pass them on to other users of the device.

Intended use

This wireless charger is intended exclusively for the power supply of smartphones with an operating voltage of 5V direct current and are suited for wireless charging. Another use, or one going beyond this, is deemed as not intended and can lead to damages and injuries.

This product is not intended for commercial use or for medical and special applications, where the failure of the product can cause injuries, mortalities or considerable material damages.

Claims of any kind due to damages from improper use or non-observance of safety instructions are excluded.

Specifications

Qi enabled	yes
Input power	5V / 2A
Output power	5V / 1A
Maximum power	5W (10W with fast charger; not included)
Frequency	110 – 250kHz
Charging efficiency	≤75%
Charging distance	≤10mm
Overcharge protection	yes
High temperature protection	yes
Over circuit protection	yes
Short circuit protection	yes

In the box

- Wireless charger
- Micro USB cable

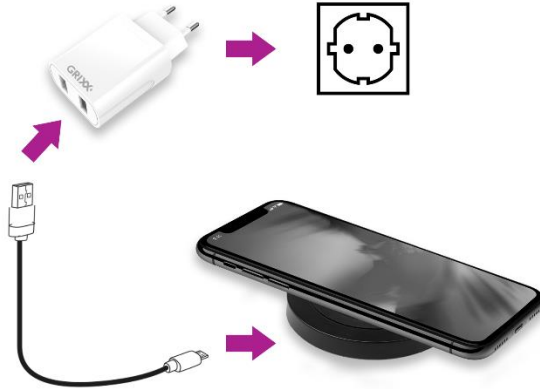
Grixx User Guide

Qi devices

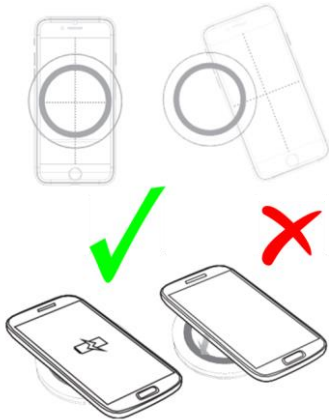
This wireless charger can charge all Qi-enabled devices.

How to use the wireless charger?

- Connect the wireless charger to a power source using the included Micro-USB cable.



- When the power is on, the indicator light will be lit blue once.
- To charge a device, place it in the centre of the wireless charger, the indicator light will stay lit blue while charging.
 - Make sure you place the smartphone correctly on the charging plate.



- The charger will detect the smartphone and will automatically start charging.
 - When an abnormality or interference occurs it will automatically turn off.
- When your device is completely charged, the indicator light will turn off.
- Remove the device from the charging pad.

Phone cases

It can charge your smartphone with phone case unless thickness is less than 5mm.

Cleaning

- If the charging pad needs cleaning, wipe it using a soft, dry cloth.
- Never use any abrasive cleaning agents.
- Periodically wipe off any accumulated dust.

Grixx User Guide

Frequently asked questions & solutions

LED indication light is not on!

- Make sure that wall charger is charging and check if the charging cable is plugged in correctly.

Smartphone does not charge!

- Make sure that there is no metal or magnetic materials on the back of smartphone. and the phone case thickness is less than 5mm.

Important safety instructions

Failure to follow the safety instructions can lead to fire, electrical shock, personal injury or property damage or damage to the wireless charger.

Make sure to read the entire manual.

- Do not use this unit for anything other than its intended use.
- Keep the unit away from heat sources and direct sunlight.
- Do not expose the unit to extreme high or low temperatures; below 0° C and above 35° C
- Do not let the unit come in contact with water or any other liquid. If the unit gets wet, immediately unplug it from the power source.
- Do not handle the unit, USB cable or wall charger with wet hands .
- Do not use the product if it has been dropped or damaged in any way.
- Do not disassemble to device into its component parts and do not try to repair it yourself. It does not contain any parts requiring maintenance. Repairs to electrical equipment should only be performed by a qualified electrician. Improper repairs may place the user at serious risk and the guarantee expires in this case.
- If you have an electrical healthcare device, such as a pacemaker, consult a physician before using this product.
- Do not place metals and/or magnetic cards, such as credit cards or key rings on or near this product.
- Use the specified power source and voltage.
- Do not use a voltage converter/travel adapter.
- Make sure the wall charger is inserted correct in the electrical outlet; when not in use, unplug the wall charger.
- Place the unit on a sturdy and flat surface during charging.
- Keep the unit out of reach of children.
- The device develops warmth when in use, this is normal. Do not cover the device when this is in use.

Operating conditions

Operate the device at 0 to 35 degrees Celsius at max. 90% relative humidity (for a short time). If you do not use the charger for a longer period of time, store it at between -10 and 45 degrees Celsius at max. 90% relative humidity (for a short time).

Exclusion of liability

The firmware and/or hardware may be changed at any time without prior notice. For this reason it is possible that parts of these instructions, technical data and images in this documentation differ slightly from the product in your possession. All points described in these instructions only serve the purpose of clarification and must not inevitably correspond to a certain situation. Legal claims cannot be made on the basis of these instructions.

Grixx User Guide

Environmental information



All unnecessary packaging has been omitted. We have tried to make the packaging easy to separate into two materials: cardboard and plastic. The whole product packaging consists of materials which can be recycled and reused if disassembled by a specialized company. Please observe the local regulations regarding the disposal of packaging materials and old equipment.



This symbol on packaging signifies that the producer has made a financial contribution towards the recovery and recycling of packaging.

Disposal of your old product

Your product is designed and manufactured with high quality materials and components, which can be recycled and reused.



This symbol on a product means that the product is covered by European Directive 2012/19/EU and cannot be disposed of with normal household waste. We strongly advise you to take your product to an official collection point. Inform yourself about the local separate collection system for electrical and electronic products. Follow local rules and never dispose of the product with normal household waste. Correct disposal of old products helps prevent negative consequences for the environment and human health.

Grixx User Guide

Compliance

Compliant with CE



This symbol means that the product is compliant with health, safety, and environmental protection standards for products sold within the European Economic Area. The product is manufactured in accordance with provisions imposed by EMC (Electromagnetic Compatibility) and RoHS (Restriction of Hazardous Substances) Directives. To minimize the environmental impact and take more responsibility to the earth we live on, the product complies with the restriction of SVHC (Substances of Very High Concern) and REACH (Registration, Evaluation, Authorization, and Restriction of Chemicals) regulated by the European Union.

Social Compliance

Grixx endorses the importance of equal and good working conditions for everyone within the production chain. That is why the manufacturer of this product is BSCI and /or SA8000 certified. This means that this product is designed and produced in a community that adheres to ethical sustainability and endeavors to protect the health, safety, and rights of the employees and environment in which they operate.

The producer follows the rules based, among others, on the United Nations' International Labor Organization (ILO) 'code of conduct' and the Human Rights Declaration. The main principles affiliated with the social compliance include:

- No discrimination
- No child labor
- Legal minimum wages
- Protection on the number of hours people have to work
- No forced labor
- Safe working environment
- Measures against corruption

Having the Grixx product manufactured in compliance with social sustainability values, where high standards are required of the supplier, helps contribute to the people involved in production of the product being treated fair, with dignity and respect.

For more information go to <https://www.amfori.org/>



Grixx User Guide

About Grixx

Grixx offers a complete range of mobile accessories that enable users to optimize the use of their mobile device. Each product offers great value for money and is developed and produced with respect for the environment, people and working conditions.

The range contains – amongst others – headphones, powerbanks, (wireless) chargers, sync & charge cables and many more!

For more information and more products please go to www.grixx.eu.

Grixx and the Grixx logo are registered trademarks of Leli Group Holding B.V.; Leli Group Holding B.V. is the warrantor in relation to this product.

GRIXX